

FREE



THE ESSENTIAL RESOURCE FOR  
DERBYSHIRE FAMILIES WITH 0-11 YEAR OLDS

READ ONLINE AT [WWW.BOOMDERBYSHIRE.CO.UK](http://WWW.BOOMDERBYSHIRE.CO.UK)

ISSUE 36

NOV / DEC 2024



PHOTO CREDIT: STUDIO 1823



# MOORWAYS WATER PARK

Moor Lane, Allenton, Derby DE24 9HY



[everyoneactive.com/Moorways](http://everyoneactive.com/Moorways)



## BOOM... Christmas is coming!

The countdown is on! Whether you love to go big with Christmas Eve boxes, visits to Santa, matching pyjamas, overflowing stockings and Christmas dinner with all the trimmings, or whether you prefer to keep things simple, for most of us Christmas is a time of family, friends and fun.

In our fabulously festive issue, we're super excited to announce the return of **Boom's 12 Makers of Christmas!** We've scoured the county and have found another group of incredibly talented creators to help you **shop local and shop small** this Christmas time. Each one has generously offered us a discount or perk too, especially for you!

Staying on the theme of presents, Kate Brennan (The Reading Doctor) has suggested some **brilliant gifts to encourage your reluctant readers.** Local mum and Instagram creative, Maria Torres, has shared about her family's **unique Spanglish Christmas.** And if this time of year is a tricky one for you, then Boom Buddy mum – Stacey – has you covered with a **wonderful list of winter wellbeing ideas** to help you make the best of it.

Amy Stevenson is back with not one but **two crafts in our Creative Corner** and, finally, we've come up with our **six ways to save money without losing the magic** this Christmas.

Keep an eye on Instagram and Facebook for festive giveaways and a special Christmas holidays What's On blog post, as well as festive adventures from our wonderful Boom Buddy families.

Wishing you joy and peace this Christmas,

*Steph & Heather*

steph@boommagazine.co.uk  
heather@boommagazine.co.uk  
www.boomderbyshire.co.uk



## inside

Timetable of Groups and Classes	4-7
Boom's 12 Makers of Christmas	10-12
A Spanglish Christmas	15
Nov/Dec Events Guide	18-21
Winter Wellbeing	25
Creative Corner	27
Christmas Gifts for Reluctant Readers	31
A Cost-Conscious Christmas	33

### Get in touch!

To list a class or event or suggest an article,  
email [steph@boommagazine.co.uk](mailto:steph@boommagazine.co.uk)

To find out more about advertising in Boom,  
email [heather@boommagazine.co.uk](mailto:heather@boommagazine.co.uk)

Or, if you're not sure who you need to speak to,  
just email [info@boommagazine.co.uk](mailto:info@boommagazine.co.uk)

We can't wait to hear from you!

### You can get your copy of Boom from many places INCLUDING:

nurseries, schools, libraries, health visitors, shops, cafes, and classes and groups for 0-11s in Belper, Ripley, Alfreton, Heanor, Wirksworth, Ashbourne, Matlock, Matlock Bath, Cromford, Duffield, Allestree, Darley Abbey and many places in between.

Cover photo by Studio 1825  
[www.studio1825.co.uk](http://www.studio1825.co.uk)

Studio1825

Magazine design by:  
45 Degrees Design & Print  
01773 880 365 • [info@fortyfivedegrees.co.uk](mailto:info@fortyfivedegrees.co.uk)

**45° FORTY FIVE DEGREES**  
Design & Print

Published by Heather Gunn and Steph Patrick of Boom Magazine Ltd. All rights reserved. Reproduction in part or whole without permission is strictly prohibited. Health related articles are intended for information only. Goods and services advertised are not necessarily endorsed by Boom Magazine Ltd or its directors. Every effort is made to ensure accuracy, however dates, locations and prices may change.



Enter our special draw to WIN two beautiful matching Mini and Me bobble hats from AliceMaudandAlbert



DEADLINE FOR ENTRIES: 23.12.2024

# GROUPS & CLASSES FOR 0-11s

## AMBER VALLEY, ASHBOURNE, WIRKSWORTH, MATLOCK AND BEYOND!

### Baby Sensory (0-13m)

**FlowMotion. Life Yoga Studio, Matlock**

Mon 10.30 - 11.30am (birth-6m)  
Mon 12 - 1pm (6m-13m)

### The Venue, Ashbourne

Tue 10 - 11am (birth-6m)  
Tue 11.30am - 12.30pm (6m-13m)  
Tue 1 - 2pm (birth-13m)

### Lion Hotel, Belper

Wed 10 - 11am (birth-6m)  
Wed 11.30am - 12.30pm (6m-13m)  
Wed 1 - 2pm (birth-13m)

### Ripley Leisure Centre

Thu 10 - 11am (birth-6m)  
Thu 11.30am - 12.30pm (6m-13m)  
Thu 1 - 2pm (birth-13m)

Interactive, educational sensory classes which will help your baby learn and develop important skills in a supportive, friendly environment. Book 07989 443734 • [www.baby.sensory.com/centralderbyshire](http://www.baby.sensory.com/centralderbyshire)

### Baby Sparks Sensory Class

#### The Firebird Centre, Hilton

Tue 10 - 11am (6m-3yrs)  
Tue 11.15am - 12.15pm (6w-8m)

#### Darley Abbey Village Hall

Wed 10 - 11am (6m-3yrs)  
Wed 11.15am - 12.15pm (6w-8m)

#### Mickleover Methodist Church

Fri 10 - 11am (6m-3yrs)  
Fri 11.15am - 12.15pm (6w-8m)

Baby Sparks creates sensory adventures for babies and children which stimulate, engage and relax through singing, sensory games, instrument play, sensory play, lights and bubbles. The perfect class to nurture your baby's sensory development. £9 PAYG or cheaper if block booking. Book [www.babysparks.co.uk/derbywest](http://www.babysparks.co.uk/derbywest)

### Balance and Bloom Yoga with Emily

#### Shine with Tabitha, Belper

Wed 11am - 12pm mother and baby yoga (2m-toddling)

An hour of postnatal yoga for you to focus on your recovery/regain strength following pregnancy. Babies are very welcome! Suitable from 2mths+ Pay weekly. [www.tabitha-yoga.co.uk](http://www.tabitha-yoga.co.uk)  
[emilyplastow@hotmail.co.uk](mailto:emilyplastow@hotmail.co.uk)

### Belper Cloth Nappy Library

We have a large range of cloth nappies in all sizes from newborn to toddler available to hire. Come and see us at the monthly Transition Belper Repair Café at No.28, Belper Market place or contact us for more information or advice.

[belperclothnappylibrary@hotmail.com](mailto:belperclothnappylibrary@hotmail.com) • [facebook.com/BelperClothNappyLibrary](https://www.facebook.com/BelperClothNappyLibrary)

Most groups are term time only. Please check before you travel.

### Bridge the Gap

#### St Mary's Gate, Derby

#### Glow Girls (8-11s)

Mon 5.30 - 6.30pm  
Wed 5.30 - 6.30pm

A girls' group for school years 4 to 6, created to empower girls and help them navigate challenges they face as they grow. A cosy, safe space for girls to explore grounding, mindfulness, self-esteem, friendships, confidence building, kindness and more.

£7.50 per session.

Book by half term in advance.

#### 4Week Emotions Course (5-11s)

Tue 5.30 - 6.30pm (12 Nov - 03 Dec)

Tailored to support children and proactive parents. Each week covers an aspect of emotional wellbeing, from understanding feelings and managing worries to navigating big emotions and celebrating self-discovery. [www.jwbridgethegap.com](http://www.jwbridgethegap.com)

### Born to Perform

#### BTP Studios, Derby

Thu 5.30 - 6.45pm Acrobatics (8+)  
Thu 6.45 - 7.45pm Commercial dance (10+)

Sat 9.30 Beginners Lyrical (3-9s)

Sat 9.30 Itsy Bitsy Acro (3-5s)

Book [www.btpstudios.co.uk](http://www.btpstudios.co.uk)

[info@btpstudios.co.uk](mailto:info@btpstudios.co.uk)

### Codnor Quackers (0-4s)

#### Codnor Sports Club

Fri 9.45 - 11.15am

A Friday morning full of fun, giggles, playing, snacks and singing at the top of our voices. Snacks for children and a lovely treat and a hot drink for the adults.

£5 for 1 adult and 1 child if you pay weekly, £20 for a 4-week prepaid ticket. £1.50 for additional adult/child. Fb Quackers in Codnor

### Derbyshire Toy Libraries

#### Toy Hire

#### Strutts Centre, Belper

Wed 10am - 12pm, Fri 9.30 - 11am, Sat 9 - 11.30am

Click & collect.

Browse: [www.derbyshiretoylibraries.org/shop](http://www.derbyshiretoylibraries.org/shop) Book collection on Fb

### Gymkids Gymnastics (toddlers+)

#### Belper Leisure Centre

Wed 9.45 - 10.30am (toddlers-3s)

Wed 10.45 - 11.30am (3-5s) coach-led

#### Genesis Centre, Alfreton

Thu 9.25 - 10.10am (toddlers-3s)

Thu 10.20 - 11.05am (3-5s) coach-led

Fri 9.25 - 10.10am (toddlers-2s)

Fri 10.20 - 11.05am (2-3s)

Fri 11.15am - 12pm (3-5s) coach-led

£42 per seven-week block.

Trials available - £6.

#### Gymkids with CIA

#### Genesis Centre, Alfreton

Thu 4 - 4.45pm mini gymnasts

(2-4s with parent)

Thu 4.45 - 5.30pm beginner (4-5s)

Thu 5.35 - 6.20pm

beginner/intermediate (6-7s)

Thu 6.25 - 7.10pm intermediate (8+)

£30 per month. Trials available - £6. Learn new gymnastics skills including balance, coordination and using equipment. Meet new friends and build confidence all whilst having fun! Book 07894 987280

[gymkidsema@hotmail.com](mailto:gymkidsema@hotmail.com)

### Infinite Wellbeing

#### Community Centre

#### Market Street, Heanor

Mon to Fri 9am - 3pm; Sat 10am - 3pm

Role play area for children with a dedicated baby and sensory area. £6 per family. Sessions (included in the entry cost) run throughout the week including Musical Mamas, Messy Play, Rhyme Time and Fun & Fit. Booking not required. Family SEND session each Wednesday 3 - 5pm. Book [www.infinite-wellbeing.co.uk](http://www.infinite-wellbeing.co.uk)

### Infinity Dance Academy (2+)

#### Brailsford School (Thu)

5 - 5.45pm Splits & Tricks Minis (4+)

5.45 - 6.30pm

Splits & Tricks Juniors (7+)

#### Brailsford Institute (Sat)

9 - 9.30am Nursery Ballet & Tap (2+)

9 - 9.30am Rainbow Ballet & Tap (3.5+)

9.30 - 10am Rainbow Modern (3.5+)

9.30 - 10am Primary Modern (5+)

10 - 10.30am Primary Ballet & Tap (5+)

10 - 11am Preliminary Ballet & Tap (6+)

10 - 10.30am Junior Contemporary (7+)

11 - 11.30am Junior 1 Freestyle (7+)

11 - 11.30am Junior 2 Freestyle (9+)

12.30 - 1pm Jun/Int Gymnastic Dance (7+)

Fun & friendly dance classes for children aged 2 years +. NATD exams, shows and performances. Other classes available: Tue, Thu and Sat.

Prices from £4.

Book [www.infinitydanceacademy.brailsford.co.uk/registration-form](http://www.infinitydanceacademy.brailsford.co.uk/registration-form)

[infinitydanceacademy@hotmail.co.uk](mailto:infinitydanceacademy@hotmail.co.uk)

07866 443047 • 07505 898616

### Languages for All

Language learning for all ages. Groups or individually. Online or in person.

[jmoses@languagesforall.org.uk](mailto:jmoses@languagesforall.org.uk)

07918 173844

[www.languagesforall.org.uk](http://www.languagesforall.org.uk)

### Messy Munchies (6m-4yrs)

#### All Saints Church Hall, Matlock

Mon 10 - 11am

Food sensory play, allowing children to explore foods in a fun environment which can help with the weaning process. Each month is themed starting with Under the Sea for November and then a festive theme in December. £7.50.

Book [www.bookwhen.com/messymunchies](http://www.bookwhen.com/messymunchies)

### Mini Acorns (2-5s)

#### Ilam Park

3rd Mon of the month  
10.45am - 12.30pm

A morning of nature-based craft, discovery and play with a new theme every month. Dress for the weather. Accessible, step-free routes. Meet at the Welcome Hut to sign in and receive your parking pass. Also receive 10% off at the Manifold Team. Booking essential via the Ilam Park website. £5 per child.  
01335 350503  
ellie.smith2@nationaltrust.org.uk

### Mini First Aid Nottingham & Derby

#### Across Derbyshire including Belper, Clay Cross, Darley Abbey, Matlock and Oakwood

Award winning 2-hour baby and child first aid classes. Ideal for parents and expectant parents. Babies welcome. £25pp. Private classes also available. Check the website for upcoming dates. [maria@minifirstaid.co.uk](mailto:maria@minifirstaid.co.uk)  
07806 820393  
[www.nottingham.minifirstaid.co.uk](http://www.nottingham.minifirstaid.co.uk)

### Moo Music Alfreton Area (0-5s)

#### Little Moo's Play Barn

Various classes Mon to Thu, morning and afternoon  
Multisensory baby and toddler classes where we sing, dance and have fun to a unique catalogue of songs – you won't find our music anywhere else. £7.50 PAYG or block book classes £7  
Book [bookwhen.com/moo-musicalfreton](http://bookwhen.com/moo-musicalfreton) • 07368 523259  
[moomusicalfreton@outlook.com](http://moomusicalfreton@outlook.com)

### Nature Tots (0-4s)

#### Carsington Water Outdoor Classroom

Mon 10am - 12pm  
Fortnightly 04/11, 18/11, 02/12, 16/12  
A wide selection of outdoor activities including themed activities, stories, mud painting and sensory play. Pay on arrival, parking included. £6 first child; £3 sibling.

### Phonics with Robot Reg

#### Vanessa's School of Dance, Belper

Mon 9.45 - 10.30am mini class (1-3s)  
Mon 10.45 - 11.30am presch (3-4s)  
Fun, high energy and educational sessions for toddlers and preschoolers that support the development of early language and literacy skills. £6.50 per session. Pre-booking essential. Termly and half termly bookings 07812 023666 • [lindsay@robotreg.co.uk](mailto:lindsay@robotreg.co.uk)

### Phonics with Robot Reg

#### Hulland Ward Village Hall

Mon 9.45 - 10.30am mini (1-3s)  
Mon 10.45 - 11.30am presch (2.5-4s)  
**Uttoxeter School of Dance**  
Mon 9.45 - 10.30am mini (1-3s)  
Mon 10.45 - 11.30am presch (2.5-4s)

### The Play Village, Ashbourne

Wed & Thu 9.45 - 10.30am mini (1-3s)  
Wed & Thu 10.45 - 11.30am  
presch (2.5-4s)

Fun, high energy and educational sessions for toddlers and preschoolers that support the development of early language and literacy skills. Block bookings - £7 per session. Pre-booking essential.  
Book [www.robotreg.co.uk/derbyshire](http://www.robotreg.co.uk/derbyshire)  
07949 029755 • [ali@robotreg.co.uk](mailto:ali@robotreg.co.uk)

### Pregnancy & Post Natal Pilates (babies welcome)

#### Belper Pilates Studio, East Mill

Mat work - Wed 7.10pm  
Reformer - Thu 9.45am, Fri 10.20am  
Our physio-led classes are part of the Belper Health Hub. Mums and mums-to-be of all levels of fitness will benefit from safe mat or reformer Pilates instruction from trained physiotherapists. Babies are welcome at all sessions. Book 07703 116284  
[www.belperlifefitnessphysio.co.uk](http://www.belperlifefitnessphysio.co.uk)

### Primrose Art Club (4-13s)

#### St Mark's Church, Openwoodgate

Wed 4.15 - 5.15pm (4-9s)  
Wed 5.20 - 6.20pm (10-13s)  
Fri 4.15 - 5.15pm (10-13s)  
Fri 5.20 - 6.20pm (4-9s)  
Arts and crafts group sessions where kids can explore their creativity and develop skills.  
Book [primroseartclub@gmail.com](mailto:primroseartclub@gmail.com)  
[www.primroseart.club](http://www.primroseart.club) • 07387 962150

### Puddle Ducks (0-10yrs)

#### Various Derbyshire Venues

Mon - Sun (all lessons 30mins)  
So, you want your child to learn to swim. Let's help them learn the right technique, in the right environment, with the best people. Let's give them the courage to be fearless, make friends, swim strongly and have fun. Then let's see where those skills might take them. Swim Academy.  
Let's do this. £16.50 per session.  
Book [derbyshire@puddleducks.com](mailto:derbyshire@puddleducks.com)  
[www.puddleducks.com](http://www.puddleducks.com)

### SEN-Fit Tea Time Club

#### Spondon Methodist Church

Mon 4.30 - 6.30pm (8-16s)  
**SEN-Fit, Langley Mill**  
Thu 4 - 6pm (10-16s girls)  
**St Hugh's Church, Borrowash**  
Fri 4.30 - 6.30pm (8-16s)  
Fun activities fostering confidence and friendship. £10 per week. Booking required. Book [info@sen-fit.co.uk](mailto:info@sen-fit.co.uk)

### Sparks Film Club (7-11s)

#### The Grand Pavilion, Matlock Bath

Wed 5.30 - 7.30pm  
Ignite imagination, build confidence and encourage a host of new skills whilst learning about the different aspects of filmmaking in these fun and friendly classes. The autumn term

there is Finishing Touches. 10 weeks not including half term. Membership costs £56.25 monthly or £250 termly. Discounts for siblings or groups.  
Book [DerbyshireNorth@sparksarts.co.uk](mailto:DerbyshireNorth@sparksarts.co.uk) • [www.sparksarts.co.uk/product/filmmaking-classes-derbyshire-north/](http://www.sparksarts.co.uk/product/filmmaking-classes-derbyshire-north/)

### Taekwondo Maestros & Masters Academy (4+)

#### Little Eaton Village Hall

Tue 7 - 9pm (8+)  
Sat 9 - 10am (4-7s)  
Sat 10am - 12pm (8+)  
Improve your fitness, flexibility, balance, confidence, discipline and moral values with the Korean martial art, Taekwondo! A great sport for your little ones (4+) and even for yourself as a fun, family activity. £30 per calendar month.  
Book [admin@mandm.academy](mailto:admin@mandm.academy)  
07818 559309 • [www.mandm.academy](http://www.mandm.academy)

### The Drama Loft (6-12s)

#### Duffield Baptist Church

Mon 6.15 - 7.15pm  
Term time drama club that encourages social and communication skills, where young people can keep their imaginations alive, build confidence and, most importantly, HAVE FUN! Free taster session. Register prior to attending. £7 per session (sibling discount).  
Book 07857 316322 or Fb

### The Little Baby Sanctuary (0-active crawling)

#### Fusion Yoga Well-being Centre, Ripley

Tue 10.30 - 11.30am baby massage  
Tue 1 - 2pm baby yoga  
**Sage Yoga Studio, Belper**  
Thu 10.30 - 11.30am baby yoga  
Thu 1 - 2pm baby massage  
**Anna Michelle's School of Dance, Darley Abbey**  
Fri 10.30 - 11.30am baby massage  
Fri 1 - 2pm baby yoga  
Gentle, interactive strokes and movement supporting common ailments, concerns and baby milestones with Nicky, qualified NNEB nursery nurse, baby massage and baby yoga instructor.  
Book [www.thelittlebabysanctuary.co.uk](http://www.thelittlebabysanctuary.co.uk) • 07739 551379

### TinyTalk (0-4s)

#### St John's Methodist Church, Allestree

Mon 9.45 - 10.45am (babies)  
Mon 11.15am - 12.15pm (toddlers)  
**The Church on Oakwood**  
Tue 9.45 - 10.45am (toddlers)  
Tue 11.15am - 12.15pm (babies)  
Communicate with your baby before they can speak! At TinyTalk we sign, bounce and giggle through each class, while you learn a handful of useful BSL signs with action songs, stories and familiar nursery rhymes. Enjoy social time and a nice hot cuppa and biscuits after every class. All class sizes





are limited. Book: [bookwhen.com/](http://bookwhen.com/)  
[tinytalkderbynorth.com/](http://tinytalkderbynorth.com/)  
[www.tinytalk.co.uk/emilyreeve](http://www.tinytalk.co.uk/emilyreeve)  
**Belper groups back in January but look out for Christmas specials!**

### **Twistin Tines Adventures (0-18m non-walkers)**

#### **Belper Community Hall**

Mon 12.30 - 1.30pm

Tue 11.15am - 12.15pm

#### **Arc Leisure Centre, Matlock**

Wed 11.15am - 12.15pm

Innovative sensory adventures to help your baby grow!

Block bookings - 4 trial classes.

£20 for new customers.

Book [www.twistintots.co.uk](http://www.twistintots.co.uk)

07977 578359

[jacqui@twistintots.co.uk](mailto:jacqui@twistintots.co.uk)

### **Twistin Tots (0-5s)**

#### **Belper Community Hall**

Mon 9.45 - 11.30am stay and play

Tue 9.45 - 10.30am

#### **Arc Leisure Centre, Matlock**

Wed 9.45 - 10.30am

#### **Darley Abbey Village Hall**

Thu 9.45 - 11.30am stay and play

Magical music and movement classes for under 5s and their grown-ups.

Weekly or block bookings - 4 trial classes £20 for new customers.

Book [www.twistintots.co.uk](http://www.twistintots.co.uk)

07977 578359

[jacqui@twistintots.co.uk](mailto:jacqui@twistintots.co.uk)

### **Vanessa's School of Dance (2-18s)**

#### **Vanessa's School of Dance, Belper**

Mon 4.15 - 4.45pm nursery ballet & tap (2-4s)

Mon 4.45 - 5.15pm ballet & tap (reception)

Thu 4 - 4.30pm musical theatre (reception)

Sat 9 - 9.30am Tiny Diamonds acro (4-6s)

Sat 9.30 - 10am modern dance (5-7s)

Mon to Thu 4pm onwards and Sat 8.45am - 6.30pm (see timetable for more classes)

Ballet, tap, modern, contemporary, musical theatre, singing, acrobatics and street dance. Adult classes offered in tap, ballet & fitness.

Book [www.vsdance.co.uk](http://www.vsdance.co.uk)

01773 823309 • 07581 228557

### **Woodland Connections**

#### **Shining Cliff Woods**

#### **Kids' Woodland Adventures**

3rd/4th Sun of the month

17 Nov 10am - 1pm; 29 Dec 11am - 2pm

Sundays were made for adventures, so let your kids go wild in the woods on these fantastic days of fun and discovery. Drop-off sessions for school year 1 upwards. £16

#### **Woodland Home Educating Families**

26 Nov 12 - 2.30pm

Join us for lots of fun in the woods. There will be different things happening at each session, dependant upon the weather, season, and the interests of the group. £3.50 per person (children and adults)

Book via Eventbrite

[info@woodlandconnections.org](mailto:info@woodlandconnections.org)

Most groups are term time only.

Please check before you travel.

### **UNDER £4 OR FREE**

#### **Acorns Toddler Group (0-4s)**

#### **Woodlands Church, Allestree**

Mon 9.30 - 11.15am Free play, snacks, singing and a Bible story.

[www.woodlandschurch.org.uk](http://www.woodlandschurch.org.uk)

01332 551336

#### **B.E.A.R.S. Breastfeeding Support Group**

#### **Heanor Children's Centre**

Tue 9.30 - 11am (fortnightly)

#### **Alfreton Library**

2nd Mon of the month 12 - 1pm

#### **St Mark's Church, Openwoodgate**

Fri 1 - 2.30pm

Refreshments, social and breastfeeding support with a chance to meet other parents! Older siblings very welcome.

Please check the BEARS Facebook page for group updates before you set out.

For urgent support, call BEARS on 07776 495900 or use Fb messenger.

#### **Breastfeeding Network**

#### **Derbyshire Antenatal Workshop**

#### **Online**

2nd Thu of the month 8 - 9.30pm

Workshop for pregnant parents interested in learning more about breastfeeding. Free but register to receive the invite. Check the Fb page for details and the Eventbrite link.

#### **Bridge the Gap**

#### **Sinfin Family Hub**

#### **Family Drop-In (0-5s)**

Tue 10 - 11.30am

These free drop-in sessions offer a friendly and relaxed space for families to support their wellbeing, get creative and talk to the Bridge the Gap team.

Parents, expectant parents, babies and young children (under 5) are all welcome. There's no need to book, just come along.

#### **Becket Family Hub, Derby**

#### **Introducing Emotions (0-2s)**

Thu 9.30 - 11.30am

A free 10-week course for parents and children under 2 years that will gently introduce emotions through creativity, play and stories. Email to find out more or register:

[www.jwbridgeghegap.com](http://www.jwbridgeghegap.com)

#### **Connected Perinatal Support**

#### **Becket Family Hub**

Mon 10 - 11.30am Bump to Babies (bump-2s)

#### **Normanton Library**

Mon 3 - 4pm Bumps, Babies & Books (bump-5s)

#### **NICU, Derby Royal Hospital**

Tue 1.30 - 2.45pm Coffee Afternoon

For families on this ward only.

#### **Watermeadow Road Community Room**

VWed 12.30 - 2pm Tea and Tots (bump-5s)

#### **Oakleigh Avenue Community Room**

Thu 10am - 12pm Bump to Babies (bump-1s)

#### **Derwent Family Hub**

Thu 10am - 12pm Dads' Space (0-5s)

#### **Racecourse, St Mark's Road, Derby**

Thu 7 - 9pm Dads' Space (newborns welcome)

Expect a warm welcome, non-judgemental peer support and a nice cuppa! No need to book.

[www.connectedperinatalsupport.org](http://www.connectedperinatalsupport.org)

[admin@perinatalsupport.org.uk](mailto:admin@perinatalsupport.org.uk)

01332 412561 office

07719 064014 message

#### **Denby Bottles Messy Church**

#### **Denby Bottles Methodist Church**

3rd Sun of the month 10.15am

Crafts, food, music and worship. No need to book.

#### **Derbyshire Dales Mum2Mum**

Breastfeeding Support Group

#### **The Play Village, Ashbourne**

1st Wed of the month 12.15 - 2.30pm

#### **Hulland Ward Millennium Hall**

3rd Wed of the month 10 - 11.30am (at Hulland Hippios)

#### **Wirksworth Memorial Hall**

1st Thu of the month 9.45 - 11.15am (at Wirksworth Stay and Play)

#### **Ashbourne Elim Church**

Fri 10 - 11.30am (weekly)

Free drop-in sessions run by local mums trained in peer support. Part of the Breastfeeding Network. All welcome.

#### **Derbyshire Toy Libraries Stay and Play**

#### **Glebe Field Centre, Crich**

Mon 9.30 - 11am

#### **Grassmoor Community Centre**

Tue 9.30 - 11am

#### **Belper Community Hall**

Wed 9.30 - 11am

#### **Kilburn Village Hall**

Thu 9.30 - 11am

Price varies from £2.4.

Additional siblings/adults £1. Under 6m go free. No booking required.

#### **Struts Centre, Belper**

2nd Sat of the month 9.30 - 11am

multiples playgroup

For carers of twins and triplets.

Friends of multiples welcome. £4 for the first child. Additional siblings/adults £1.

Book [www.derbyshiretoylibraries.org](http://www.derbyshiretoylibraries.org)

#### **Holbrook Baby and Toddler Group (0-5s)**

#### **Holbrook Moor Methodist Chapel**

Wed 9 - 11am

Have fun and share experiences in a friendly environment. Toys for all ages, crafts, stories and singing plus a healthy snack for the children and cake and a drink for adults. £2 per family. No need to book.

07980 652431 or Fb

#### **Hulland Hippios Baby & Toddler Group (0-5s)**

#### **Hulland Ward Millennium Hall**

Wed 10 - 11.30am

A range of stimulating play activities

for under 5s, including a baby area. Snacks and drinks. Songs and a story at the end. Busy, friendly group. New families welcome.  
£3 per family. No booking required.  
Fb or [www.hullandchurches.org.uk/groups/hulland-hippos](http://www.hullandchurches.org.uk/groups/hulland-hippos)

### **Kilburn Baby & Toddler Drop-In**

**Kilburn Village Hall**  
Sun 9.30 - 11.30am (fortnightly)  
Welcoming all families, babies and toddlers to our play, colouring, reading & sensory areas. Drinks provided.  
Christmas special 08/12.  
07877 356262 •  
kilburnbaby@gmail.com  
Fb KilburnBabyAndToddlers

### **Little Church (0-5s)**

**St Peter's Church, Belper**  
Wed 10am - 12pm £1 per family  
office@stpetersparishbelper.org.uk

### **Little Sparkles (0-4s)**

**Ashbourne Elim Church**  
Thu 9.30 - 11am  
Parent and toddler group with lots of toys, a short story and some songs. Snacks provided for children and drinks for adults. Booking preferred but not essential.  
Book ashelim.ch/sparkles  
office@ashbourneelim.church  
01335 344338

### **Little Springs (0-5s)**

**Wellspring Church, Wirksworth**  
Tue 9.30 - 11am  
A range of toys, a weekly craft activity plus story time and songs. Stay and play with your little one and enjoy making new friends and learning together. Suggested donation of £2 which covers refreshments – real coffee and homemade cake!  
[www.wellspringchurchwirksworth.co.uk/little-springs](http://www.wellspringchurchwirksworth.co.uk/little-springs)  
Fb Little Springs at Wellspring Church

### **Messy Church (all ages)**

**St Swithun's Church, Belper**  
2nd Sat of the month 4 - 6pm (donation)  
office@stpetersparishbelper.org.uk  
**St Mark's Church, Belper**  
4th Sat of the month 4 - 6pm (donation)  
office@stpetersparishbelper.org.uk

### **Nature Tots**

**Avenue Country Park, Chesterfield**  
Fri 10 - 11am Monthly 22/11 & 20/12  
Meet at the carpark for a short walk with fun nature activities along the way. Free. No booking required. Free parking. [www.derbyshirewildlifetrust.org.uk/things-to-do](http://www.derbyshirewildlifetrust.org.uk/things-to-do)

### **NCT Bumps and Babies (0-5s)**

**West End Community Centre**  
Tue 10am - 12pm  
Open all year round for anyone pregnant or parents/carers of pre-school age children. Hot and cold refreshments and biscuits always available. Free parking. Suggested donation £2.  
clairebrassington.nct@hotmail.co.uk

**Prams & First Shoes (0-2.5s)**  
**St Mark's Church, Openwoodgate**  
Thu 9.30am - 12pm  
01772 826519

### **SEN-Fit Support Sessions**

**SEN-Fit, Langley Mill**  
**SEND Parent/Carer Support Group**  
1st Wed of the month 9.30 - 11am  
Sessions for parents and carers to chat and get information, support and signposting. Includes refreshments.  
**Walking Group**  
2nd Thu of the month 6.30 - 8pm  
Evening walks blending fitness with nature and social support.  
**Neurodiverse Adults' Social Group**  
4th Thu of the month 6.30 - 8pm  
All sessions free to attend.  
No need to book.  
info@sen-fit.co.uk

### **Stanley St. Andrew's Stay and Play (0-5s)**

**Stanley St. Andrew's CofE Primary School**  
1st Fri of the month 2 - 3pm  
Free play session for pre-schoolers, led by a qualified teacher to encourage and develop school readiness. Sit back with a hot drink and have a chat whilst staff run the activities. 01159 324252  
info@st-andrews-pri.derbyshire.sch.uk

### **Toddlers Inc. (0-5s)**

**Denby Bottles Methodist Church**  
Tue 10am - 12pm  
Lots of toys for all ages, finishing with a song and rhyme time. 50p per child includes a snack and drink for all.

### **Tots @ Dots**

**Dot-Teas Emporium, Belper**  
Thu 10am - 12pm  
Drop-in meet-up for mums, dads and carers to come along with little ones. Free but the tea rooms ask that you buy a drink. No booking required.

### **Whistlestop Wildlife Watch Group (5-11s)**

**Various locations**  
Sun 17 Nov 10am - 12pm Tree planting at the Eastern Moors  
Sun 08 Dec 10am - 12pm Winter celebration and end of year party at the Whistlestop Centre, Matlock Bath.  
Monthly wildlife-themed activities at a different nature reserve/wild space in central and north-east Derbyshire or at the Matlock base. £2.50 for one child; siblings 50p extra. Children must be accompanied by an adult. Meeting points confirmed via email.  
Book [whistlestop\\_watch@yahoo.com](mailto:whistlestop_watch@yahoo.com)

### **Wirksworth Stay and Play Baby & Toddler Group (0-5s)**

**Memorial Hall, Wirksworth**  
Thu 9.45 - 11.15am  
Volunteer-run playgroup with sensory play, a wide range of toys, and themed creative activities.  
No booking required. Includes snack for the children. Drinks and biscuits for the adults. 0-6m £1.50; 6m+ £3 per family. More info on Fb.

### **Yellow Daisies Stay & Play (0-5s)**

**The Village Hall, Heage**  
Mon, Wed & Fri 9 - 11am play group - £3.50  
Tue 9 - 11am messy play - £3  
Includes snack and drink plus hot drinks for adults.  
yellowdaisies72@gmail.com

### **LIBRARIES FREE**

#### **Alfreton**

Mon 11 - 11.30am story time

#### **Allestree**

Tue 2.30 - 3pm rhyme time

#### **Ashbourne**

Tue 10.15 - 10.45am story time

#### **Belper**

Wed 11 - 11.30am story and rhyme time

#### **Heanor**

Mon 2 - 2.30pm story and rhyme time (fortnightly)  
Thu 11 - 11.30am story and rhyme time (fortnightly)

#### **Matlock**

Thu 10.30 - 11am story and rhyme time

#### **Ripley**

Tue 10 - 10.30am rhyme time

#### **Wirksworth**

Thu 2.15 - 2.45pm children's singalong

**DERBYSHIRE FAMILY HEALTH SERVICE**  
01246 515100



Follow us on **social media** for updates and loads more content.



Find all this information online at

[www.boomderbyshire.co.uk](http://www.boomderbyshire.co.uk)



**boom**



Teaching independent swimming from birth...

Swimming Lessons for Babies & Children 0-4 Years



...continuing the journey up to the age of 10. Let's do this!



Join us at any point!



10% off your 1st booking\* use code BOOM10



e: derbyshire@puddleducks.com

\*T&Cs apply



Infinity Dance Academy

Ballet ★ Tap ★ Modern

Freestyle ★ Street ★ Contemporary

Gymnastic Dance ★ Splits & Tricks

Fun & friendly dance classes for children aged 2 years +

NATD examinations, shows & performance opportunities



07866 443047 | 07505 898616

infinitydanceacademybrailsford.co.uk

Infinity Dance Academy

idabrailsford



Filmmaking workshops for ages 7-14  
**Matlock**

# Finishing Touches

Saturdays & Wednesdays  
[www.sparkarts.co.uk](http://www.sparkarts.co.uk) **SPARKS**



SEND Support • Holiday Clubs  
 Tea Time Club • ages 7-16 Family Support  
**Promoting independence and social skills**

**CONTACT US TO FIND OUT MORE!**

📷 @senfit\_derby | 📘 SEN-Fit CIC  
 ✉ info@sen-fit.co.uk | ☎ 07734 455806  
**BASED IN HEANOR, BORROWASH AND SPONDON**



**Millers Green Farm,  
 Wirksworth**

Outdoor, nature inspired,  
 muddy and messy stay  
 and plays for ages 1-6

📘 Millers Minis  
 @millers\_green\_minis

Various sessions available  
 Book via:  
[bookwhen.com/k9vc3](http://bookwhen.com/k9vc3)



*Vanessa's*  
 School of Dance.

We invite dancers of all ages  
 and abilities to join our school.

Whether it is for exam work,  
 competitions, or simply for fitness.

[www.vsdance.co.uk](http://www.vsdance.co.uk)  
 T: 01773 823309 • M: 07581 228557  
 E: [ness\\_tap@hotmail.com](mailto:ness_tap@hotmail.com)  
 Albert House, Derwent Street, Belper DE56 1UQ



Baby Signing  
 Toddler Talking



Find your  
 local classes

"You'll love it, your babies will love it. 10/10."  
 - Jen, TinyTalk parent



Allestree &  
 Oakwood  
[tinytalk.co.uk/emilyreeue](http://tinytalk.co.uk/emilyreeue)

Belper  
 Bookings open for Jan 2025!  
[tinytalk.co.uk/kathgreaves](http://tinytalk.co.uk/kathgreaves)

"We both love it so much! After just one class I knew I would book the rest of the term."  
 - Rhiannon, TinyTalk parent



"A judgement-free zone, with other lovely parents."  
 - Annie, TinyTalk parent



...and there are lots more TinyTalk classes around the East Midlands!

# BOOM'S 12 MAKERS OF CHRISTMAS

Our fabulously festive and truly unique shopping guide is back! Here at Boom Magazine, we want to encourage you to shop local this Christmas so we've searched high and low to find 12 talented, creative makers from right here in Derbyshire! Each one is also offering us an unmissable Boom perk, especially for our readers this Christmas.

## Abywillow

### Heanor

*Aby crochets colourful gifts and blankets and handmakes unique fabric lettering*



Prices: £3 - £20

To order: Instagram @abywillow or at Infinite Wellbeing until sold out!

Christmas order deadline:  
01 Dec on Instagram

**Boom Perk:**  
**Mention Boom magazine at Infinite Wellbeing for free gift wrapping**

## Belper Coffee Co.

### Belper

*A variety of artisan coffees, sourced from around the world and hand-roasted in Belper weekly*



Prices: £8.25 - £16

To order: [www.belper.coffee](http://www.belper.coffee) or Facebook and Instagram

Christmas order deadline:  
17 Dec

**Boom Perk:**  
**Use BOOM20 for 20% off orders over £10. Includes free local delivery within 5 miles**

## Empowered Warrior Candles

### Riddings

*Dominique and Joe create hand-poured natural wax melts and candles to empower and uplift mindset*



Prices: £2 - £25

To order:  
[www.empoweredwarriorcandlecompany.com](http://www.empoweredwarriorcandlecompany.com)

Christmas order deadline:  
19 Dec or collect until 24 Dec

**Boom Perk:**  
**Message the website contact page to receive an extra free product**

## Katie Abey

### Matlock

*Katie designs colourful and uplifting gifts to empower and bring a smile*



Prices: £2 - £28

To order: [www.katieabey.co.uk](http://www.katieabey.co.uk) or at Punnydukes in Matlock

Christmas order deadline:  
13 Dec or shop in Punnydukes until 24 Dec

**Boom Perk:**  
**Use Boom15 for 15% off online**

Share the  
**LOVE!**

We'd love to know  
if you buy from any  
of these marvellous  
makers! Share a photo  
on Facebook or  
Instagram, tagging us  
and the maker!

## Nature's Needlework

### Littleover, Derby

*Jo creates woodturned frames with fabric artwork scenes, inspired by nature and all made from sustainable sources.*



Prices: £25 - £75

To order: Instagram @natures-needlework or at The Cabin, Belper

Christmas order deadline: 04 Dec or shop in The Cabin in Belper until 24 Dec

**Boom Perk:**  
**Mention Boom to receive 10% off online and in The Cabin, Belper**

## Oh My Goodness Bakery

### Belper

*Hayley bakes delicious sourdough bread products, brownies, blondies and a range of festive goodies*



Prices: £4.50 - £50

To order: Oh My Goodness Bake on Facebook or Instagram

Christmas order deadline: 18 Dec for collection or delivery within Belper

**Boom Perk:**  
**Mention Boom to receive a free sweet treat with any order until Christmas**

## Park Designs

### Hathersage

*Si designs quality giftware and household goods inspired by an outdoor life*



Prices: £14.95 - £250

To order: [www.parkdesigns.co.uk](http://www.parkdesigns.co.uk) or at Park Design's Gallery and Shop in Hathersage

Christmas order deadline:  
18 Dec

**Boom Perk:**  
**Use PDBOOM20 for 20% off everything online until 31 Jan (minimum spend £14.95)**

## Roses and Angels

### Derby

*Angela handmakes unique clothing and accessories for 0-7s, with love and attention to detail in every piece*



Prices: £3.50 - £45

To order:  
[www.etsy.com/rosesandangelsdesign](http://www.etsy.com/rosesandangelsdesign)

Christmas order deadline:  
02 Dec made to order; 10 Dec ready made

**Boom Perk:**  
**Use Boom10 for 10% off**

## Rusty's Room

### Marehay, Ripley

*Sarah creates rustic hand woven home décor and personal gifts that are full of character by using her hand spun wool*



Prices: £10 - £60

To order: [www.etsy.com/uk/shop/RustysRoom](http://www.etsy.com/uk/shop/RustysRoom) or at The Cabin, Belper

Christmas order deadline: 08 Dec online or shop in The Cabin in Belper until 24 Dec

#### **Boom Perk:**

**Use Boom10 for 10% off until 31 Jan online and in The Cabin, Belper**

## Stage Left Lux

### Derby

*Scott makes unique feature lighting from upcycled and repurposed materials in a rustic, steampunk style*



Prices: £50 - £150

To order: [www.stageleftlux.co.uk](http://www.stageleftlux.co.uk)

Christmas order deadline: 30 Nov for bespoke orders; 15 Dec ready made

#### **Boom Perk:**

**Use BOOM15 for 15% off until 31 Jan**

## Stevie Davies Glass Artist

### Wirksworth

*Stevie is a glass artist, jewellery designer and workshop tutor running a thriving contemporary craft gallery*



Prices: £14 - £75

To order: [www.stevie-davies.co.uk](http://www.stevie-davies.co.uk) or at Create Space Studio & Gallery in Wirksworth

Christmas order deadline: 05 Dec or shop in the Gallery until 23 Dec

#### **Boom Perk:**

**Use BOOM20 for 20% off Dichroic Glass Jewellery before 05 Dec**

## White Peak Distillery

### Ambergate

*An award-winning craft distillery, producing authentic, small batch spirits and providing a great visitor experience*



Prices: £18 - £75

To order: [www.whitepeakdistillery.co.uk](http://www.whitepeakdistillery.co.uk)

Christmas order deadline: 19 Dec

#### **Boom Perk:**

**Use BOOMGIFT for free delivery on postal vouchers and spirits in Nov**

SHOP LOCAL AND SUPPORT  
SMALL BUSINESSES THIS CHRISTMAS!

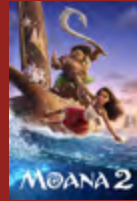
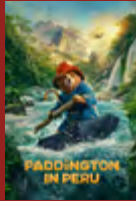
# CHRISTMAS

AT

## THE RITZ CINEMA

• BELPER •

Join us this winter for a selection of wonderful festive films



BOOK ONLINE: [www.ritz-belper.co.uk](http://www.ritz-belper.co.uk) OR CALL US: 01773 822 224

VISIT US - 76b King Street • Belper • Derbyshire • DE56 1QA

## THE CATHEDRAL QUARTER

# Christmas Grotto

Derby Museum and Art Gallery  
Opening 30th November  
[derbymuseums.org/CQGrotto](http://derbymuseums.org/CQGrotto)



CATHEDRAL  
QUARTER  
DERBY

[derbymuseums.org](http://derbymuseums.org) | [derbycathedralquarter.co.uk](http://derbycathedralquarter.co.uk)

01332 641901 |   

Sponsored by the Cathedral Quarter Business Improvement District

SCAN HERE  
TO BOOK  
YOUR  
TICKETS



Photography by Pictoria Pictures

**BABY SPARKS**  
Baby and toddler sensory sessions

**Fun, stimulating and engaging baby and toddler sensory classes**

**TUESDAY**  
Hilton  
The Firebird Centre

**WEDNESDAY**  
Darley Abbey  
Village Hall

**FRIDAY**  
Mickleover  
Methodist Church

**Spark Movers/ Shakers**  
6-36 months 10am

**Little Sparks**  
1-6 months 11:15am

**BOOK A CLASS**  
[www.babysparks.co.uk/derbywest](http://www.babysparks.co.uk/derbywest)





**Phonics Classes** Ashbourne  
Uttoxeter  
Hilton  
Hulland Ward

**For ages 1 - 4**

**High energy**


**fun**

**Phonics with Robot Reg**

**Educational**

Opening children and their parents to a world of Literacy

Find us:  
f @  
[www.robotreg.co.uk/derbyshire](http://www.robotreg.co.uk/derbyshire)  
Email: [a@robotreg.co.uk](mailto:a@robotreg.co.uk)  
Tel: 07949 029755



**4 classes £20\***  
Twistin Tots  
Music, Movement and Fun

**Magical Musical Classes Making Marvellous Memories!**  
For Babies, Toddlers and Pre-schoolers (ages 0-5)

Engaging music classes that are fun, innovative and developmental. An engaging mix of rhymes, songs, light shows and innovative props to educate your children and keep them entertained.

**Bobber**  
Darley Abbey  
Matlock

Engaging Music Classes that are Fun, Innovative and Developmental

Contact Jacqui:  
07977 578359  
[Jacqui@twistintots.co.uk](mailto:Jacqui@twistintots.co.uk)  
[www.twistintots.co.uk](http://www.twistintots.co.uk)





**Shining Cliff Centre C.I.C**  
Wellbeing in the Woods

Stay at the hostel in the woods; accommodating up to 20 people in the heart of Shining Cliff woods; a superb get-away-from-it-all that is only accessible by foot.

Or hire our Woodland Hut to use as your base for a day of exploring the woodland or sitting around the campfire with family and friends.

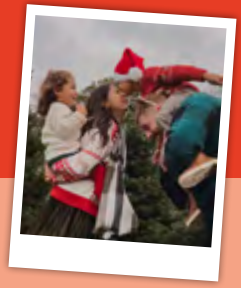
We also run woodland sessions and birthday parties in partnership with All About the Calm. Follow us on Eventbrite to keep updated with our family days, children's sessions and adult wellbeing events in the woods.

**www.shiningcliffhostel.co.uk**  
**www.woodlandconnections.org**  
**Call Kate on 07794 268059 for more information**

SCAN ME



# A SPANGLISH CHRISTMAS



Written by María Torres

*María is a Spanish teacher and content creator based in the East Midlands who spends her free time baking and reading.*



Living in another country is such a positive experience, one that somehow transforms you into a different version of yourself. I have been an expat in the UK for over nine years now and, after so long, I don't know where I fit in anymore but there's something I do know: I want my children to grow up feeling Spanish too and developing that sense of cultural identity that I'm so proud of.



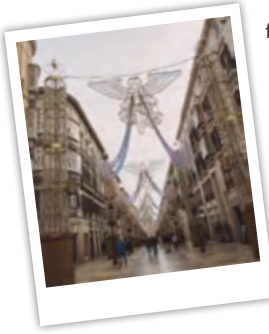
As a mum, nothing can compare to the make-believe magic we create this time of year and I have adopted many UK traditions I hadn't even heard of when I was little. It takes a lot of planning to put together an advent calendar with activities, create a December box, and to move around our two mischievous elves every night. However, we also celebrate Christmas the Spanish way.



Being miles apart from my family and friends is always hard but even more so on Christmas Eve. In Spain, that's when family gets together to eat a big feast in the evening featuring lots of seafood and amazing starters. We call it Nochebuena which translates to 'the good night' and at home I always make a big fuss to make it special, getting us dressed in our fanciest clothes and spending many hours in the kitchen to set out a delicious spread.



One of my favourite things we do differently is the way we say farewell to the year. It might sound a bit odd, but all Spaniards sit in front of the television at midnight to eat 12 grapes, one with each strike of the clock. I'm not sure what the origin of this tradition is, but it's meant to bring good luck



for the New Year and I think it's really unique and fun so even my English husband joins in with us. It's actually not that easy because you need to be extremely fast, so foreigners find it a bit tricky!



I consider myself very lucky because we get to go to Spain every year after Christmas Day to join in all the festive fun and spend time with our loved ones. A tradition we can't miss is to take the kids to see the nativity scene displayed at the Town Hall in Málaga. My mum and dad always used to take us when we were little so being able to do this with my own kids is something truly special to me. Our kids wear the traditional shepherd's costume on this day which is what children wear in school or nursery for their Christmas nativity.



Finally, something that people always find a bit shocking is that children in Spain don't get their presents on the 25th December. Instead, they wait until January since Christmas has a more religious meaning in Spain so it's the Three Wise Men who bring presents in accordance with the Bible. Being Spanglish children, they actually get double the presents and they wake up on the 6th January to find not only presents under the tree but also their shoes filled with sweets from the Kings!



Feliz Navidad!



Follow Maria on Instagram for beautiful photography, days out, recipes, crafts and book recommendations: @ourspanglishfamily

**BRIGITTE'S**  
*Helping Hands*  
**Domestic Cleaning Services**  
 Est. 2012

*Are you looking for a reliable, trustworthy, efficient cleaning service with high standards and value for money? Then look no further!*

**COMPETITIVE RATES  
 SPACES AVAILABLE**

 British Cleaning Certificate 

For further information contact Brigitte  
**07866 368704**  
 hhdes@mail.com www.bhhdcs.co.uk

**WANT TO LEARN A LANGUAGE OR SIMPLY IMPROVE?**  
 We are prepared to help you succeed!  
 \*\*\*\*\*

  
 LANGUAGES FOR ALL  
 SPEAK TO THE WORLD



We can help you:

- Achieve the grade you want at GCSE and A level
- Learn an additional language
- Develop skills at Key Stages 2 & 3
- With home-schooling
- Learn languages for business/work/holidays
- Perfect for the novice and the experienced
- One-to-one or groups

☎ 07918 173844  
 ✉ e-mail: jmoses@languagesforall.org.uk  
 🌐 <https://www.facebook.com/Languagesforalltd>  
 🌐 [www.languagesforall.org.uk](http://www.languagesforall.org.uk)



**CREATIVE Children's Party Workshops**  
**TRIX**

Artist Lead Craft workshop  
 All materials provided  
 Theme of your choice  
 Artwork/craft to take home

**Book your party workshop today!**


Scan to find out more!!

@CreBivetrix TEL: 07967367583  
 Email: CreBivetrix@yahoo.com  
 DBS Checked & fully insured



**DANCE & PERFORMING ARTS CLASSES FOR AGES 3 UPWARDS!**

CLASSES IN MUSICAL THEATRE, COMMERCIAL & LYRICAL DANCE PLUS ACRO & DRAMA AT OUR SPONDON, DERBY STUDIOS.


SCAN THE CODE TO BOOK YOUR FREE TRIAL TODAY!  
 WWW.BTSTUDIOS.CO.UK OR INFO@BTSTUDIOS.CO.UK



**Bespoke Celebration Cakes & Sweet Treats**

All occasions  
 Vegan alternatives  
 Decorated Cupcakes  
 Brownies + Blondies  
 Cookie Pies  
 Traybakes



10% Off Exclusive Offer Code: BoomDND






THE  
LION HOTEL

A WARM WELCOME  
FOR FAMILIES

Hotel, Restaurant & Bar  
Gastro Pub & Pizzeria  
Superb children's menu  
Function rooms



**THE LION HOTEL BELPER**

24 Bridge Street  
Belper, DE56 1AX  
enquiries@lionhotelbelper.com  
lionhotelbelper.com  
01773 824 033



CABOODLE  
--- Textiles ---

Let kids  
express  
themselves  
with our  
vibrant  
prints  
and colours



Facebook/Instagram:  
CaboodleTextiles

--- [www.caboodletextiles.co.uk](http://www.caboodletextiles.co.uk) ---

# EVENTS

## NOVEMBER & DECEMBER 2024



Events happening locally for all ages!

We've split this bumper events guide up into handy sections like theatre, lights switch ons and chances to meet Santa. For bonfire and fireworks events, check out our October Half Term blog post. We'll also be releasing a supersized Christmas Holidays blog post in December. Find them both at [www.boomderbyshire.co.uk/blog](http://www.boomderbyshire.co.uk/blog)

### **Derby Lantern Sculpture Trail FREE**

#### **Various Locations**

Sat 26 Oct to Tue 31 Dec

Commissioned by Surtal Arts with support from Arts Council, eight emerging artists from Derby and Derbyshire will create 11 stunning giant lantern sculptures in a trail through the city.

### **Brick Show FREE**

#### **Rosliston Forestry Centre**

Sat 02 Nov – 10am to 4pm

Amazing Lego displays, competitions, Lego stalls and more. Powered by Northern Brickworks [nblug.org.uk](http://nblug.org.uk)

### **Community Day FREE**

#### **Crich Tramway Village**

Sun 03 Nov – 10am to 4.30pm

A free admission day for local residents living within 5 miles (by road) of Crich Tramway Village.

### **A Christmas Feast**

#### **Chatsworth House**

Sat 09 Nov to Sun 05 Jan

Immerse yourself in a feast for the senses with the magic and wonder of a new festive story, Henry and the Lion's Christmas Feast. Tickets provide entry to the house, garden, farmyard and adventure playground. Tickets: adults from £32.00; children (3-16s) from £8.00; under 2s free

### **A Journey Through Time & Light**

#### **Crich Tramway Village**

Sat 09 & Sun 10 Nov – 12 to 5pm

A Victorian era experience with live performances, lively music, tram rides and a magical glow. Advance on-line pre-booking only.

### **Board Games FREE**

#### **Alfreton Library**

Sat 09 Nov & Sat 07 Dec

10am to 12pm

Drop-in for all the family.

### **Bridge the Gap Open Day FREE**

#### **10/11, St Mary's Gate, Derby**

Sat 09 Nov – 10am to 2pm

Visit Bridge the Gap's new location and discover how they can support your child's mental health. Tombola, raffle, lucky dip, story time, craft activities, stalls and cakes.

### **Buy It Now Sales**

#### **Derbyshire Toy Libraries**

Sat 09 Nov & 07 Dec

#### **Virtual Toy Auctions**

Thu 14 Nov & 12 Dec

[www.derbyshiretoylibraries.org](http://www.derbyshiretoylibraries.org)

### **Behaviours That Challenge Workshop FREE**

#### **SEN-Fit, Langley Mill**

Mon 11 Nov – 6.30 to 8pm

Learn how to support your child at these times. Email [info@sen-fit.co.uk](mailto:info@sen-fit.co.uk) to book.

### **Derby Book Festival**

#### **Various Locations**

Thu 14 to Tue 19 Nov

A range of events for children and adults around Derby. Find out more at [www.derbybookfestival.co.uk](http://www.derbybookfestival.co.uk)

### **Christmas at The Gruffalo Discovery Land**

#### **Twycross Zoo**

Sat 16 Nov to Tue 24 Dec

Gruffalo Discovery Land is brimming with magical moments for you and your family this festive season. Just step into the deep dark wood and you'll see...

Tickets: adults £38; children £32; under 3s £14

### **Illuminated Walk**

#### **Heritage Wood, Ashbourne**

Sat 16 & Sun 17 Nov – 5 to 7.45pm

Lift your spirits following a trail of lights through the woods.

Refreshments and live music.

Tickets: £10 adult; £7 child; under 5s free

### **The Polar Express Event**

#### **Infinite Wellbeing**

Sat 16 Nov – 10am to 1pm

(pre-book a timeslot)

A magical journey full of fun and hot chocolate! £12 per child. Book via [www.infinite-wellbeing.co.uk](http://www.infinite-wellbeing.co.uk)

### **Light Post Farm**

#### **White Post Farm**

Every Thu to Sun from Sun 21 Nov to Sun 22 Dec

A magical after-dark trail alongside a mini Christmas market, farm access and Christmas crafts.

Tickets: from £12; under 2s free <https://www.gigantic.com/light-post-farm-tickets>

### **Lights of Abraham**

#### **Heights of Abraham**

Fri 22 Nov to Mon 30 Dec

Take a moonlit cable car flight across the river and above an avenue of colour in addition to all the usual attractions.

Tickets: from £21; under 3s free

### **Paddington in Peru (U)**

#### **Derby QUAD**

Fri 22 Nov to Thu 05 Dec

Paddington travels back home to the Peruvian jungle to visit his beloved Aunt Lucy, now a resident at the Home for Retired Bears.

### Winter Footprints Trail **FREE**

#### **Ilam Park, Dovedale**

Sat 23 Nov to Sun 05 Jan  
Join us on a self-guided adventure to uncover the hidden footprints of our winter wildlife. Track down all 10 and see if you can identify the creatures that they belong to.

### **Cathedral Quarter Ice Rink Cathedral Green**

Sat 30 Nov to Tue 31 Dec  
Get your skates on and glide onto this year's ice rink at Cathedral Green, with views of the Nordic Bar, and a twinkling backdrop of festive trees.

### **Christmas at Kedleston Hall Kedleston Hall**

Sat 30 Nov to Sun 05 Jan  
Lots of fun family activities including an advent trail, wreath making, choir performances and craft sessions.

### **Christmas Family Festivities FREE**

#### **Markeaton Park**

Sat 30 Nov to Sun 01 Dec  
The annual Christmas extravaganza features live music, family festive activities, walkabout characters, a craft fair and a bustling outdoor market.

### **Tractor Run**

#### **The Kedleston Country House**

Sat 30 Nov from 5.30pm  
Watch the tractors leave the Kedleston Country House, spectate whilst they are on their route, or join us back at our venue to watch their return. More information at [www.kedlestoncountryhouse.co.uk/tractor-run/](http://www.kedlestoncountryhouse.co.uk/tractor-run/)

### **Family Festive Films **FREE****

#### **Infinite Wellbeing, Heanor**

Every Sat in Dec – 1.30 & 3pm  
No need to book.

### **Anxiety and Anger Workshop FREE**

#### **SEN-Fit, Langley Mill**

Thu 05 Dec – 6.30 to 8pm  
Learn how to support your child with managing big feelings. Email [info@sen-fit.co.uk](mailto:info@sen-fit.co.uk)

### **Christmas Treasure Hunt**

#### **Shining Cliff Woods**

Sun 08 Dec – 11am to 1.30pm  
Complete the elves' tasks and be rewarded with hot chocolate and marshmallows by the fire! Book via Eventbrite.  
Tickets: £16.50

### **A Musical Merry Christmas**

#### **Cathedral Quarter Waterfall/ Cornmarket**

Sat 14 Dec – 11am to 4pm  
Jingle all the way at Derby Cathedral Quarter's A Merry Musical Christmas! Brass bands belting out your favourite Christmas tunes, choirs singing their hearts out, and a whole lot of festive fun in between.

### **Crafty Saturday **FREE****

#### **Alfreton Library**

Sat 14 Dec – 10.30am to 12.30pm  
Drop-in for the all the family.

### **Grinchmas Afternoon Tea**

#### **Riddings Park Community Centre**

Sun 15 Dec – 1.30 to 3.30pm  
Grinch-themed food, hot chocolate, festive activities and children's gifts.  
Tickets: adults £12.95; children £14.95

### **Family Christingle Service**

#### **Allestree Woodlands Church**

Tue 24 Dec – 4pm

## **CHRISTMAS PARTIES**

### **Twistin Tots Christmas**

#### **Parties**

#### **Belper Community Hall**

Sat 07 Dec – 2.30 to 4.30pm & Sun 08 Dec – 10am to 12pm plus all usual weekday classes  
A fabulous festive musical session with lots of festive songs and props. Make a Christmas decoration, decorate a Twistin Tots tree and have a visit from Rudolph and his twin. Price includes chocolate treat

Information is correct at the time of printing, but please check before you attend.

and gift. Fancy dress competition.

Tickets: £12 child; £4 adult; £7 siblings under 12m

### **Twistin Tinies Christmas Parties**

#### **Belper Community Hall Sun 08 Dec – 1.30 to 3.30pm**

A festive musical adventure with Christmas songs, props and baby signs. Enjoy a visit from Rudolph and the chance to make a baby keepsake. Hot drinks and mince pies for parents and siblings. Gift for accompanying siblings. Fancy dress competition.

### **Children's Christmas Party Infinite Wellbeing, Heanor**

Sat 14 Dec – 11am to 1pm  
Christmas party fun, crafts, games and food.  
Tickets: £15

### **Let's Play Messy Christmas Special**

#### **Stanley Village Hall**

Sat 14 Dec – 10.30 to 11.30am  
Explore a winter wonderland of messy and sensory play, followed by a warm bath, sensory lights, Christmas lullabies and lots of bubbles! Suitable from 6m-5yrs

### **Derbyshire Toy Libraries**

#### **Christmas Parties**

Sat 14 Dec for Multiples & Friends  
Mon 16 to Thu 19 Dec at all Stay and Plays

### **The Grinch's Disco**

#### **Buttermilk Coffee House**

Sun 22 Dec – 3 to 5pm  
Enjoy dancing, games, face glitter, pass the parcel, delicious snacks and a party bag to take home. Spaces are limited. Suitable for age 1+.  
Tickets: £17.95

## **MARKETS AND FAIRS**

### **Wirksworth Farmers' Markets FREE**

#### **Memorial Gardens**

Sat 02 Nov & 07 Dec – 9am to 2pm  
Independent businesses, local food and drinks and live music.

**Belper Farmers' Market**  
**FREE**

**Belper Market Place**  
Sat 09 Nov & 14 Dec  
8.30am to 1pm  
Local food and drink producers.

**Thornbridge Christmas Market**  
**Thornbridge Hall**

Every Fri, Sat & Sun from 15 Nov to 08 Dec – 10am to 4pm  
Get ready for a holly-jolly Christmas shopping experience! Back and bigger than ever, with over 30 local artisan stalls, it's the perfect place to find unique gifts, indulge in festive treats, and soak up the festive spirit!  
Tickets: family: £22; adults £8; children (3-16yrs) £4; under 3s free

**Ethical Christmas Market**

**The Chocolate Factory**  
Sat 16 Nov – 10.30am to 3.30pm  
With 40+ ethical and sustainable businesses showing you an alternative way to shop. Where every £ spent can change lives for the better.  
Tickets: adults £2 on the door

**Children First's Christmas Market** **FREE**

**Electric Daisy, Derby**  
Sat 23 Nov – 12 to 6pm  
Drinks, entertainment, stalls and s'mores.

**Denby Festive Weekends** **FREE**

**Denby Pottery Village**  
Fri 29 Nov to Mon 02 Dec & Thu 05 Dec to Sun 08 Dec  
Hand-crafted gifts, artisan food and drink and 30 hand-picked stall holders.

**Ashbourne Makers Markets**  
**FREE**

**Shrovetide Walk**  
Sat 30 Nov & 21 Dec  
10am to 4pm  
Supporting independent makers and producers. Nov market is also the Ashbourne Christmas Market.

**Winter Market** **FREE**

**St Peter's Church, Belper**  
30 Nov – 2 to 5pm (inc. children's craft area)  
Stalls, mulled wine, cakes, children's craft area, choir and a harpist.

**Christmas Fair** **FREE**

**Infinite Wellbeing, Heanor**  
Sun 01 Dec – 10am to 2pm  
Free role play entry and free entry to the fabulous Christmas fair.

**Christmas Market** **FREE**

**Uppertown Social Centre, Ashover**  
Sun 01 Dec – 10am to 3pm  
Hear the brilliant Ashover Band playing festive tunes as you browse. Dogs welcome.

**Matlock Victorian Christmas Market** **FREE**

**Hall Leys Park**  
Fri 06 Dec to Sun 08 Dec  
With over 200 stalls, discover a winter wonderland with an incredible array of unique gifts, crafts, and goodies for everyone on your Christmas list.

**Bakewell Christmas Sparkle**

**Bakewell Agricultural Business Centre**  
08 Dec – 10am to 4pm  
Meet Father Christmas in his cosy tipi grotto then enjoy the heated tipi bar, small animal handling with Lane End Farm Trust, face painting and the local independent Christmas market. Parking £5. Some activities involve a small fee. More information at [www.facebook.com/BakewellAHS/](http://www.facebook.com/BakewellAHS/)

**St Peters Quarter Christmas**

**Craft Fair** **FREE**  
**St Peter's Church, Derby**  
Sat 14 Dec – 11am to 4pm  
With 14 fantastic traders showcasing the best locally produced goodies, this festive extravaganza is the perfect place to find one-of-a-kind holiday gifts and treats.

**Ashbourne Carol Singing** **FREE**  
**Market Place**

Tue 24 Dec – 7.30 to 8.15pm  
Music by Ashbourne Town Band and the nativity story

**LIGHTS SWITCH ON'S**

**Ashbourne (Market Place)**

Sat 16 Nov – 4pm; lights on at 5.30pm  
Festive music and entertainment plus a craft fair in the Town Hall.

**Ifreton (Alfreton House)**

Sat 23 Nov – 2 to 6pm; lights on at 5.30pm  
Stalls, fair and Santa's grotto at Alfreton House.

**Heanor (Market Place)**

Sat 23 Nov  
Look out for further details

**Belper (Memorial Gardens)**

Sun 24 Nov – 3 to 9pm; lights on at 5.45pm  
Winter food and gift fair on King Street plus live music.

**Ripley (Market Place)**

Sun 24 Nov – 12 to 6.30pm; lights on at 5pm  
Free carousel rides, carols, entertainment, stalls and Santa.

**Derby (Market Place)**

Sat 30 Nov – 4pm; lights on at 5.30pm  
Stage shows, tasty treats and fairground rides.

**Duffield (Wirksworth Rd)**

Sat 30 Nov; light on at 6pm  
Carols, mince pies and mulled wine

**Matlock (Hall Leys Park)**

Sat 30 Nov lights; Sun 01 Dec fireworks  
As part of the Victorian Christmas market. Times TBC.

**MEET SANTA**

**Santa's Magic Cabin**

**Derbion Shopping Centre**  
Sat 02 Nov to Tue 24 Dec  
Various times  
Book your tickets now to meet Santa, his elves and Snowy Joey. Book at [www.derbion.com/santas-magic-cabin](http://www.derbion.com/santas-magic-cabin)

**Meet & Greet with Santa**

**Infinite Wellbeing, Heanor**  
Sat 16 Nov – 11am to 1pm (pre-booked timeslots)  
Christmas fun crafts and a photoshoot with Santa.  
Tickets: adults £1; children £10

**Magical Santa Experience**

**Denby Pottery Village**  
Sat 23 Nov to Tue 24 Dec

Enjoy a personalised visit to meet Santa in his cosy cabin, receive an elf observation report and hand-pick a present from a large selection of gifts for all ages. 'Special midweek offer – visit for £16 with code **BOOMSANTA24**

### **Breakfast with Father Christmas**

**Kedleston Hall**  
Sat & Sun from Sat 30 Nov to Sat 21 Dec – 8 to 9am  
The elves will greet you on arrival and Father Christmas will provide gifts and photo opportunities.

### **Breakfast with Santa Calke Abbey**

Weekends from 30 Nov to 22 Dec 8.30 to 10.30am  
Start your day with a hearty breakfast and enjoy a visit from Father Christmas, who will be stopping by with gifts for all good boys and girls. Pre-booking essential.

### **Singalong with Santa**

**Kedleston Country House**  
01, 07, 14 & 22 Dec – 11am to 4pm  
Come along and meet Santa Claus in his magical grotto! Discover who has been naughty or nice, sing festive songs together, and tell him what's on your Christmas list. Tickets: children £15

### **Santa Day**

**Heage Windmill**  
Sun 08 Dec – 10.45am to 3.10pm  
Meet Santa in his grotto. Tickets: £7

### **Breakfast with Mrs Claus Denby Pottery Village**

11, 12, 16, 17, 23, 24 Dec 9 to 11am  
Storytime and festive games with Mrs Claus, as well as a small Christmas craft gift bag for every child.

### **Afternoon Tea with Santa Denby Pottery Village**

Fri 13 to Sun 22 Dec  
Enjoy a fun and festive Afternoon Tea with Santa, upstairs at Bourne's Coffee Shop & Bistro. Includes storytime with Santa, festive games with Santa's Helpers and a small Christmas craft gift bag for every child.

### **Breakfast with Santa Ilam Park, Dovedale**

Sat 14, Sun 15, Sat 21 & Sun 22 Dec 9 to 10.30am  
Enjoy a traditional English breakfast in the Manifold Tea Room and meet our special guest, Father Christmas! Tickets: adults £20; children (3+) £15; 2s and under £5

### **Meet Santa at Tots at Dots Dot Teas, Belper**

Sat 21 & Sun 22 Dec  
Meet Santa in his grotto and receive a gift. More info to come on Facebook.

## **THEATRE**

### **A Christmas Carol Derby Theatre**

Fri 22 Nov to Sat 04 Jan  
An exciting, magical and vibrant adaptation of Charles Dickens' treasured novel, recommended for audiences aged 7+.  
Tickets: from £15

### **Chicken Licken**

**Derby Theatre**  
Thu 05 Dec to Sat 04 Jan  
Expect beautiful puppetry, fantastic storytelling, amazing live music and original songs. Suitable for age 3+.  
Tickets: from £15

### **The Snowman & The Bear, the Piano, the Dog and the Fiddle Derby Reach, Pride Park**

Thu 05 Dec – 6.30 to 8pm  
Make it a Christmas to remember with this much-loved animated film performed with a live orchestra.  
Tickets: adults £15; children £10

### **Cinderella**

**Derby Arena**  
Fri 06 to Tue 31 Dec  
Everyone gets to go to the ball with Derby's annual pantomime spectacular.  
Tickets: from £24

### **Fairy Tale: An Adventure with Lockheart and Hawkins Derby QUAD**

Sat 07 Dec to Fri 03 Jan  
An Oxford University Professor is thrust into a world of fantasy and adventure on a secret mission across Europe, steeped in fairy tales and folklore.  
Tickets: from £14.50

### **Polaris the Snow Bear Belper Community Hall**

Sat 21 Dec, Doors Open at 4.30pm  
A classic Badapple Productions family show for ages 4+, with comedy, puppets, songs, mayhem and a touch of snowy wonder! Book via [www.belpercommunityhall.com](http://www.belpercommunityhall.com)  
Tickets: adults £12.50; children £8.50

## **TRAIN RIDES**

### **Santa Specials**

**Peak Rail**  
Weekends from Sat 30 Nov to 22 Dec, 23 & 24 Dec  
Santa and his helpers will help you get Christmas off to a magical start. Tickets: from £40 for table of 2

### **Santa's Enchanted Journey Ecclesbourne Valley Railway**

Weekends from Sat 23 Nov to 22 Dec, 23 & 24 Dec  
Help Santa complete Mrs Claus' to do list!  
Tickets: from £40 for table of 2

### **Santa Special Trains Midland Railway**

Weekends from Sat 30 Nov to 22 Dec, 23 & 24 Dec  
Sit back and let us get you into the Christmas Spirit with our Santa Special Event.  
Tickets: from £14.95



**FIND YOUR NEAREST  
FOODBANK**

Derbyshire: [www.ruralactionderbyshire.org.uk/foodbanks](http://www.ruralactionderbyshire.org.uk/foodbanks)  
Derby: [www.derbycitylifelinks.org.uk/food-banks-derby](http://www.derbycitylifelinks.org.uk/food-banks-derby)

Derby's Pantomime Spectacular

MINA ANWAR MORGAN BRIND

# Cinderella

Tickets on sale now!

Fri 6 - Tue 31 Dec, Derby Arena

Yule love Derby  
this festive season



CATHEDRAL QUARTER DERBY

## Ice Rink

Toddlers sessions — under 5s free

Sat 30 Nov - Tue 31 Dec, Cathedral Green

NORDIC BAR

Great entertainment in the tips

Sat 30 Nov - Tue 31 Dec, Cathedral Green

Sponsored by Smooth

[festivederby.co.uk](http://festivederby.co.uk)



Together, let's shape a brighter future for every child.



FOSTER



for  
EAST MIDLANDS

Derby, Derbyshire,  
Nottingham and  
Nottinghamshire  
councils need you.



Find out more and enquire at  
[fosterforeastmidlands.org.uk](http://fosterforeastmidlands.org.uk)



Funded by  
UK Government

**ARE YOU STRUGGLING WITH YOUR  
MENTAL HEALTH IN PREGNANCY  
OR AS A NEW MUM?**



**Derbyshire Healthcare**  
NHS Foundation Trust

**You are not alone...**

**at least 1 in 5 mothers  
are struggling too**

**Contact us for a confidential assessment from  
12 weeks of pregnancy onwards. We can inform  
you about the help available in pregnancy  
until your baby is two years of age**

**Derbyshire Perinatal Mental Health Service**



**Tel: 01332 623911 (Derby)  
or 01246 216523 (Chesterfield)**

**Email: [dhcft.perinatalcmht@nhs.net](mailto:dhcft.perinatalcmht@nhs.net)  
Or scan the QR code to access our  
online self referral form**



**Shoots  
from £49  
Gift vouchers  
available**

**STUDIO  
1825**  
Belper, DE56 2AT

**Your perfect gift, this Christmas.**  
From newborn babies to pets & family generations;  
there's a studio session to suit everyone.  
Purchase today from [www.studio1825.co.uk](http://www.studio1825.co.uk)



## FESTIVE EVENTS AT DENBY

Bring a little cheer with activities done together at Denby Pottery Village



### AFTERNOON TEA WITH SANTA

13th, 14th, 15th,  
18th, 19th, 21st, 22nd Dec  
From £19.95 per person



### BREAKFAST WITH MRS CLAUS

11th, 12th, 16th, 17th,  
23rd, 24th Dec  
From £19.95 per person



### SANTA EXPERIENCE

23rd Nov – 24th Dec  
From £18.95 per child

**BOOK A MID WEEK VISIT FOR ONLY £16 WITH CODE BOOMSANTA24**



**FREE ENTRY**

### CHRISTMAS MARKET

29th, 30th Nov,  
1st, 2nd Dec  
5th, 6th, 7th, 8th Dec



### WINTER WREATH WORKSHOP

29th, 30th Nov,  
1st, 6th, 7th, 8th Dec  
£45 per person



### MAKE YOUR OWN BEAR

23rd Nov, 11th, 12th, 16th,  
17th, 23rd Dec  
From £24.95 per person

For more information and to book your experience visit:

[denbypottery.digitickets.co.uk](https://denbypottery.digitickets.co.uk)

or follow the QR code

**DENBY POTTERY VILLAGE**

Derby Road, Denby, Derbyshire DE5 8NX





# WINTER WELLBEING



Written by Stacey Murray

Stacey is a Boom Buddy Mum and Director at Create & Connect Wellbeing CIC which offers creative sessions for adults to support mental health and wellbeing.

Many of us find that our mood dips in the winter months and supporting our wellbeing can feel more challenging. A combination of the shorter days, change in weather, pressures of the festive season and Seasonal Affective Disorder (SAD) – a type of depression that comes and goes in a seasonal pattern – can all be contributing factors. So, what can we do to support ourselves at this time of year?

## Embrace the winter months with time outside

The cold weather can make it feel less appealing to spend time outside but it brings so many benefits. Fresh air, connecting with nature and gentle exercise can all help to support our wellbeing and mental health.

- Wrap up warm and head out for a winter walk. The Peak District is stunning in winter and there are local organised walks that run through the winter months.
- We can think of winter as being dark, but there is so much colour to be enjoyed. Notice the changing leaves and look out for the berries adding splashes of colour such as the small orange-red Rowan berries and bright red Holly berries.
- For families, it can be great to get outside in the colder months. Whether it's a bike ride, visiting the local park, exploring a local woodland or just splashing in puddles, time in nature is just as beneficial for children in winter as it is in summer.

## Find joy in simple pleasures

The Danish word Hygge describes a cosiness and comfort that brings contentment from simple pleasures, and the winter months are the perfect time to enjoy these small, often mindful, moments. We all find joy in different things, but these are some of my favourites.

- Meeting friends for a seasonally spiced hot drink and a long chat.



- Lighting candles and snuggling up under my favourite blankets.
- Finding a new cozy jumper. I always find one I love in one of the local charity shops.



## Allow yourself to slow down and reset

So much of nature stops and slows down during winter. When the trees lose their leaves, it helps them to conserve energy and recycle nutrients for future growth. We need this too, but it can be difficult for us to do. It can be helpful to introduce some purposeful habits.

- Find a moment when you can slow down every day. Maybe it's a few minutes looking out of your kitchen window each morning, slowly enjoying your first drink of the day, or spending longer in the shower noticing how the water feels on your skin.
- Journaling can help you to process thoughts and feelings. If you're more of a visual person or find writing overwhelming, you could try creating a collage with magazine cuttings instead.
- Making time to do things that are just for you is really important. Add something that supports your self-care to your to do list every week, even if it's just for an hour.



## Always remember, it's OK to do less.



@wecreateandconnect  
@createandconnectcreativewellbeing

GLOWORM AND CHRISTMAS AT WHITE POST  
PRESENT



**"LIGHT POST FARM"**

MAGICAL AFTER-DARK TRAIL

EVERY THURSDAY TO SUNDAY  
NOVEMBER 21ST TILL  
DECEMBER 22ND

BOOK NOW



Gloworm 

Disney  
**ENCANTO**  
IN CONCERT LIVE TO FILM  
TRIM WITH LIVE ORCHESTRA  
MOTORPOINT ARENA  
NOTTINGHAM  
21st February 2025



**Gloworm** Festival  
playmobil

8TH - 10TH AUGUST 2025 | THORPESY PARK, NOTTINGHAMSHIRE

FRIDAY (CAMPING EXCLUSIVE)	SATURDAY	SUNDAY
<b>ARCTIC BATTLE</b>  WITH GLOWORM PRESENTS <b>WINTER BASH PARTY</b>	<b>REZABA HILLERZ</b> PLAYTHING BASH / BONGOS BASH MOST 8TH 9TH	<b>ARCTIC BATTLE</b> BASH / PLAYTHING BASH PLAYTHING BASH / PUG LIFE TOURS BONGOS BASH / MOST 8TH 9TH

BOOK NOW



[WWW.GLOWORMFESTIVAL.CO.UK](http://WWW.GLOWORMFESTIVAL.CO.UK)




**St Elizabeth's**  
Catholic Voluntary Academy

We are a small, friendly primary school welcoming children of all faiths, or no faith, to learn, work and play.

If you would like a tour of our school please call us on 01773 822278. We would love to hear from you.

Scan the QR code to visit our website




 Matlock Road, Belper, DE56 2JD

# CREATIVE CORNER



Written by Amy Stevenson from Primrose Art Club

Amy has loved delving into a range of creative activities since childhood due to her Granny offering space and materials. She opened Primrose Art Club to provide other children with the same opportunities.

We're spoiling you this issue with two imaginative art activities to have a go at! One uses pastels and the different leaves you can find on an autumnal walk, whilst the other is a simple, sparkly paint craft that can seem almost magical as the watercolours zip along the salt crystals.

## Salt Painting Christmas Card

### You will need:

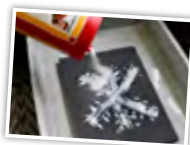
- thick card
- paint brush & water pot
- PVA glue & spreader
- table salt
- plastic tray
- watercolours



### What to do:

1. First, lightly sketch your shape onto the folded card (e.g. snowflake, star, tree, bauble).
2. Use a glue spreader or, if your bottle has a pointed nib, squeeze the glue directly onto the card to trace your shape. Keep in mind that the salt will stick wherever there is glue.

3. Place your card in a tray and sprinkle salt all over the glue. Gently tap it to loosen excess salt and re-sprinkle the excess salt on any areas where the glue is bare.



4. Leave the glue to dry for an hour. If the glue is too wet, the salt painting is not as effective.
5. Dip your brush in water and then into the paint. Paint a dot on the salt and watch as the colours travel along the salt crystals. Adding different colours not only looks good but also adds tons of fun.

6. After you have finished painting the salt, you could also add a painted background or write Merry Christmas/ Happy Holidays.



## Chalk Pastel Negative Space Art

### You will need:

- card/paper
- chalk pastels/chalk
- leaves
- collage paper (optional)
- scissors (optional)
- glue (optional)



### What to do:

1. Think about what the leaf shapes remind you of – an easy one is teardrop-shaped leaves look a bit like a candle flame.

2. Next, select a colour and hold your leaf down on the page. Rub the side of the chalk/pastel over the edge of the leaf onto the paper until you have a ring of chalk around the leaf (experiment with using the chalk's tip too).



3. When you lift the leaf off the paper, there should be a blank shape surrounded by chalk/pastel. Add other lines to help make the shape look more like the object you are trying to create (e.g. draw string to attach fairy lights together).

4. (Optional) If you have glue, scissors and collage paper, cut out and stick on a shape such as a candle. If you plan to do this, create the paper shape first so you can work out where your chalk/pastel negative space needs to go.



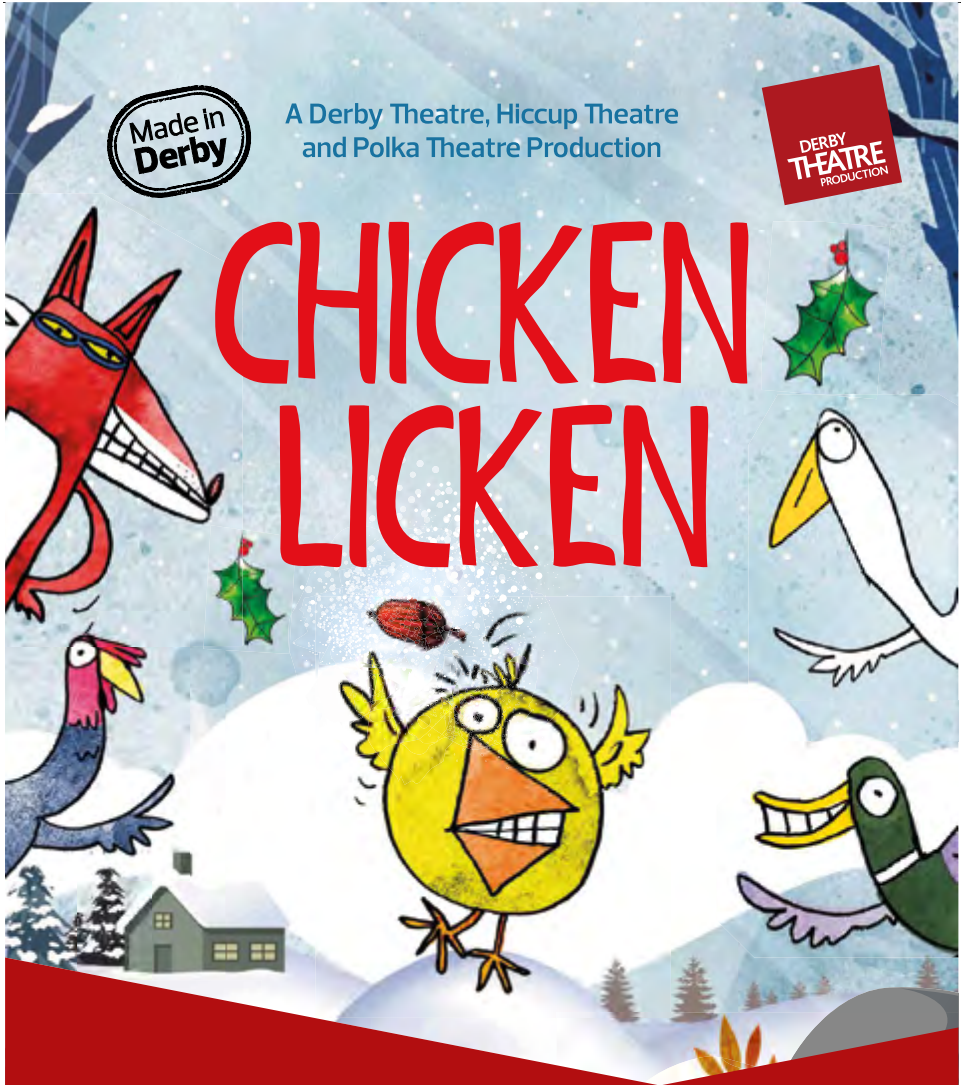
www.primroseart.club  
primroseartclub@gmail.com  
07387 962150

Made in Derby

A Derby Theatre, Hiccup Theatre and Polka Theatre Production

DERBY THEATRE PRODUCTION

# CHICKEN LICKEN



Thu 5 Dec, 2024  
– Sat 4 Jan, 2025

hiccup theatre

POLKA  
Where Theatre Begins



All performances include integrated BSL, creative captions and integrated audio description.

Derby Theatre is part of  
UNIVERSITY OF  
DERBY

LOTTERY FUNDED

Supported in public funding by  
ARTS COUNCIL  
ENGLAND

01332 593939 | [derbytheatre.co.uk](http://derbytheatre.co.uk)  
Text: 07717 346 964

# Let's get the cleaning done!

We are a locally based company providing households the very best cleaning service available.

## REGULAR CLEANING SERVICE

Typically

**£17.50**  
per hour  
inclusive

Honest, reliable, affordable,  
local, police checked cleaners  
to clean your home



## TIME FOR YOU DOMESTIC CLEANING

As featured on BBC2's Working Lunch & CH4's 'House Swap'!

call TODAY!  
**01629 332036**

\* police checked cleaners available on request.  
\* all discounts or promotions are subject to our terms  
available by visiting [www.timeforyou.cleaning](http://www.timeforyou.cleaning)

[www.timeforyou.cleaning/DerbyshireNorth](http://www.timeforyou.cleaning/DerbyshireNorth)  
Email: [derbyshirenorth@uk.timeforyou.cleaning](mailto:derbyshirenorth@uk.timeforyou.cleaning)

**Strive**  
Business Limited

Elevate Your Business with Expert Bookkeeping!

Are you overwhelmed by paperwork?  
Struggling to keep your finances in order?  
We can take away your stress!

No contracts ~ From £25.00 per hour

Call: 0333 335 5137 or  
Email: [rebecca@strivebusinesssolutions.co.uk](mailto:rebecca@strivebusinesssolutions.co.uk)

# WIRKSWORTH MARKETS



MEMORIAL GARDENS  
DE4 4DS

Be a local food hero

Essentials weekly  
Tuesday & Farmers 1st  
Saturday Monthly

SUPPORTED BY NOW AND WIRKSWORTH TOWN COUNCIL  
TEXT FOR STALL ENQUIRES 07542 168039



The Reading Doctor's mission  
is to unlock the potential in  
struggling readers  
and writers



I am a qualified teacher, based in Belper, offering one to one support using high quality, multi-sensory resources

We teach the way you learn



Contact Kate, your local Reading Doctor  
07787881704

[www.thereadingdoctors.com](http://www.thereadingdoctors.com)  
[kate@thereadingdoctors.com](mailto:kate@thereadingdoctors.com)



**BELPER PILATES STUDIO**  
The Pilates Physios

PREGNANCY • POST NATAL • MUMS & BABIES

Supporting you through an active healthy pregnancy & safe effective post-natal recovery

Classes include: Pregnancy & Post-Natal Pilates  
Mums & Babies Reformer • Mat Work Pilates Classes

See our website for 20+ Classes per week  
at Belper's East mill

[www.belperlifefitnessphysio.co.uk](http://www.belperlifefitnessphysio.co.uk)



We are a new family run  
business providing:

great coffee  
cooked breakfast  
lunches  
afternoon tea  
buffets  
Children's parties  
and fantastic gifts

Come and enjoy our secure outside courtyard seating area.  
Or try our upstairs snug, showcasing gifts such as  
children's toys, sweets, candles, much more!



We have baby changing facilities, a children's menu,  
colouring books & crayons. We are Dog Friendly too!



3 Strutt St, Belper DE56 1UN 01773 448000

## INTUITION

We Create Our Own Reality  
[www.intuition111.co.uk](http://www.intuition111.co.uk)

CLAIRVOYANT, TAROT  
READINGS, SPIRITUAL  
LIFE COACHING,  
HEALING CIRCLES,  
SPIRITUAL GUIDANCE  
WORKSHOPS AND LOTS  
MORE

Call 07780033587 or  
01773307826




**Derbyshire Toy Libraries**

# CLICK & COLLECT

OR CLICK & BROWSE

**BOOK YOUR SLOT NOW**

---

# STAY AND IS PLAY

**BACK #COMESTAY AND PLAY**

---

For more information and updates on Stay & Play Sessions visit:

[www.derbyshiretoylibraries.org](http://www.derbyshiretoylibraries.org)




Charity Number: 1081255

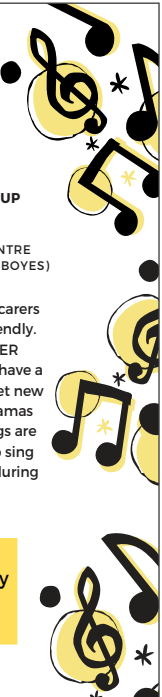
# Musical Mondays

**MELODY MAMAS**  
PARENT AND BABY SINGING GROUP  
9.30-10.15AM

INFINITE WELLBEING - COMMUNITY CENTRE  
(THE OLD METHODIST CHURCH - NEXT TO BOYES)  
MARKET STREET, HEANOR

Melody Mamas is a group for parents, carers or parents-to-be and is 100% baby friendly. We sing uplifting songs without EVER venturing near a nursery rhyme. If you have a little one aged 0-5 and are keen to meet new friends you are the perfect Melody Mamas singer. No experience needed, all songs are taught by ear and you'll never have to sing solo. Classes run weekly on Mondays during term-time

Included in Role Play Entry Price!



**4 classes £20\***  
*\*New Customers only*

**Twistin Tots Adventur**

*Innovative Sensory and Musical Adventures to help your baby grow*

*For babies from birth - 18 months (non-walkers)*

Musical and sensory classes using innovative props and baby signing.

We transport families to magical places each week and help babies to develop essential skills.

All photos taken at class

Your baby is a Blank Canvas. You are the Artist. Our classes are the Paint. Together we will create a Masterpiece.

  
 Scan here to book!

Contact Jacqui:  
 07977 578359  
[Jacqui@twistintots.co.uk](mailto:Jacqui@twistintots.co.uk)  
[www.twistintots.co.uk](http://www.twistintots.co.uk)




# Party

**PARENTS, DO YOU WANT A STRESS FREE & FULLY ENTERTAINED KIDS PARTY?**



**WE HAVE MULTIPLE THEMES TO CHOOSE FROM AT OUR SPONDON VENUE. GET IN TOUCH FOR SOMETHING MORE BESPOKE.....**

**OUR PARTIES INCLUDE:**

**3 HOSTS, VENUE, DISCO, GAMES, FACE PAINTING & BOUNCY CASTLE**

  
 MORE INFO

# ALTERNATIVE CHRISTMAS GIFTS FOR RELUCTANT READERS



Written by Kate Brennan at The Reading Doctor, Belper

*Kate is a qualified teacher and owner of The Reading Doctor, Belper, a unique tutoring service that supports struggling readers and writers in unlocking their potential.*

Recently, a parent asked me for some ideas for Christmas 'book' gifts that might help their child (who struggles with reading and never picks up a book by choice). Perhaps you're in the same boat. Every time you buy them a traditional book, it sits unopened on the bedside table. You really want your child to develop a love of reading but can't seem to find a way in. So here are some alternative reading ideas for Christmas gifts that just may spark something in your child...

## E-Readers

These are an obvious choice (although an expensive initial outlay). They can be tailored to suit your child: funky covers, adaptable backgrounds, varied font size and style (great for children with dyslexia) and 'read to me' functions. The 'thickness' of a book isn't obvious, so children won't be overwhelmed by how long a book is, or embarrassed if they aren't reading at the same level as their peers.

## Reading nook

If you have space (in your child's bedroom or elsewhere) why not splash out on some accessories and create a reading 'nook': a squashy beanbag, cushions, a bookstand or book shelves, pictures or wall art, fairy lights, a voile canopy hung from the ceiling or even a child's teepee. Making a designated area just may inspire them to listen to a story or even pick up a book by choice!



## Audio books

Listening to stories can give children access to books above their reading ability, introducing them to more advanced themes and exposing them to a wider vocabulary. It gives them more opportunities to hear what fluent reading sounds like. You can also combine listening with 'following along' in a traditional book or find merchandise that appeals to them. Try subscribing to a site such as [listening-books.org](http://listening-books.org) or [audible.com](http://audible.com).

## Subscriptions

Why not try physical or online subscriptions to magazines or comics such as [dekkocomics.com](http://dekkocomics.com), [thephoenixcomic.co.uk](http://thephoenixcomic.co.uk), [theweekjunior.co.uk](http://theweekjunior.co.uk) or the 'good old' [Beano.com](http://Beano.com) which have a wide range of publications to appeal to lots of interests. Children rarely get post these days so the arrival of that month's subscription can be an event and a way to 'big up' a reading opportunity.

## Stocking fillers

How about an E-reader stand, a reading timer or a funky reading lamp? Fun bookmarks, reading rulers/trackers or finger pointers are also cheap pressies. They help children guide themselves along the lines when they read or they could follow along while you read to them.

## Other ideas

Gifts like jigsaws, puzzle books and Where's Wally? can have a positive effect on reading ability. What about a craft set that includes cutting, sticking or sewing or a kids recipe book? These will include written instructions which need to be followed. Also consider ball games or any game that requires hand-eye coordination. All these activities can develop children's eye muscles to help with tracking, can help develop spatial awareness and can improve concentration.



[www.thereadingdoctors.com](http://www.thereadingdoctors.com)  
[kate@thereadingdoctors.com](mailto:kate@thereadingdoctors.com)  
07787 881704

# EXPLORE

with  
trentbarton

## *this Christmas*



**ranked no.1  
in satisfaction  
with bus driver**

Transport Focus survey



[trentbarton.co.uk](http://trentbarton.co.uk)






# A COST-CONSCIOUS CHRISTMAS



Written by Heather and Steph

*We're celebrating the anniversary of our first print issue with our first collaborative article! We've put our heads together to bring you six suggestions for keeping Christmas costs under control.*




We all know Christmas is billed as 'the most wonderful time of the year' but, for most of us, it's also the most expensive time of the year. It's great to be able to lavish gifts upon those we love but, let's face it, sometimes this stretches us beyond our means and can be a financial strain. Breakfasts with Santa, elaborate advent calendars, Christmas Eve boxes, matching pyjamas, bulging stockings... it all adds up! Here are some of our top tips for a more cost-conscious Christmas.



## Made with Love

Homemade gifts are a wonderful way to get into the festive mood and show someone you care. Try melting a big block of chocolate and adding things like popcorn, pretzels, cranberries, broken biscuits and edible glitter to it. Once it has set, break it up and pop it into little gift bags for a delicious sweet treat. It will go further than you think (if it makes it out of the house!). Alternatively, layer all the dry ingredients for a simple cookie or gingerbread recipe inside a clean, recycled jar. Finish it with a ribbon and personalised label for a really high-end looking gift.



## Reverse Advent Calendar

The choice of advent calendars these days is endless. With one for each member of the family and the possibility of toys, beers, cosmetics or candles behind each door, the cost mounts up. Consider, instead, adding a food item to a box each day and then donating it to a local food

bank on Christmas Eve. Satisfy the family's craving for a daily chocolate fix with a few bags of chocolate coins.

## Want, Need, Wear, Read

This lovely, simple idea involves carefully choosing just four gifts for each person and making them count. Just select something the recipient really wants, something useful, a new item of clothing and the perfect book. And leave it at that!

## Family Secret Santa

Whilst we may be familiar with this as a common workplace Christmas tradition, consider implementing it amongst the adults in your family. Agree a budget that suits everyone, use an online random name picker to match giver to receiver, and then plan a festive get together to exchange gifts.




## The Experience Gift

If it's likely that you'll go on some family day trips in 2025, why not gift these at Christmas time? A little hand drawn or printed note or 'voucher' could be wrapped in an enormous box just for fun! This gift has the added benefit of providing everyone with something to look forward to once the excitement of Christmas has passed.



## Crafty Christmas

Whilst wrapping paper seems like an obvious staple, a lot of varieties are not recyclable and many of the cheaper types rip easily. Why not pick up a big roll of plain brown paper and create your own bespoke designs? Try potato printing, pens or simple stamps (you can even use cookie cutters dipped in paint – just remember to wash them well before your next baking day!). Cut shapes out of greetings cards, magazines or old books for labels and tags, and finish with ribbon, string or even wool for a gift that will look stunning in any stocking!



**QUAD** A MAGICAL THEATRE SHOW FOR ALL THE FAMILY!

lost by presents

# FAIRYTALE

7th DECEMBER 2024 - 10th JANUARY 2025

£14.50 FULL PRICE / £11.00 UNDER 16s & CONCESSIONS / Under 2s free

Book Now at [derbyquad.co.uk/fairytale](http://derbyquad.co.uk/fairytale)

## Brand new eco-friendly school now open!



**St Mary's**  
Catholic Voluntary Academy



**St Ralph Sherwin**  
Catholic Voluntary Academy

# Come and join our St Mary's family

We also offer nursery  
education for children  
aged 3 and above

Scan the QR  
code to visit  
our website



Broadway, Derby, DE22 1AU

01332 554831

# LESTER & NIX

**VISIT YOUR LOCAL ELECTRICAL STORE!**

**WE HAVE COMPETITIVE DEALS ON  
HOUSEHOLD APPLIANCES SUCH AS:**



Washing Machines & Dryers

Fridges & Freezers

Dishwashers

TV's

Small Appliances



**We specialise in major brands such as...**

**Shark**  
**dyson**



**BOSCH**  
Invented for life

**NINJA**

**SAMSUNG**  
**SIEMENS**



**Indesit**  
Life proof.

**Hotpoint**

**LG beko**

**Contact Us Today!**

Visit our store: 11-13 King Street, Belper, DE56 1PW  
Call us: 01773 822828 Email: lesterandnix@gmail.com

# Welcome to



## Interactive role play centres based in South Derbyshire

Titchy Town and Hero Town are both indoor play villages designed especially for little ones up to 8 years of age. Children can freely explore the many different play zones in both villages. The villages are designed to allow children's imagination to run wild whilst they role play in a safe environment.

Grown-ups can participate in their child's play, or just sit back and watch them learn whilst enjoying a mug of freshly brewed tea or coffee and an amazing homemade cake from our little coffee shop.

## Where are we?

Titchy Town is based on the site of Scallywags Private Day Nursery in Chellaston (Rowallan Way, DE73 5WX).

Hero Town is based on the site of Scallywags Private Day Nursery in Melbourne (Castle Lane, DE73 8JB).

Please use Scallywags car park at both sites. You will find signage in both car parks on how to access the centres.

## How it works?

Both role play centres work on a pre-book via our website and pay on arrival basis with sessions lasting 90 minutes. On your first entry you will be issued a loyalty card and for every nine sessions you attend you will receive your 10th entry free of charge! Loyalty cards can be used across both sites. Payment is cash only.

### Titchy Town Play Village

- Castle Store
- Town House
- Vets 'n' Pets
- Anabelle's Café
- Wash 'n' go
- Harry's Yard

### Hero Town Play Village

- Dolly Dogs Grooming Parlour
- George's Garage
- Simon's Shed
- Foston's Fire Station
- Mrs Potts tearoom
- The Land Where Dreams Come True
- Castle Lane clinic
- Baby Zone

To find out more or to book into a play session...

Visit our websites: [titchytown.com](http://titchytown.com) or [hero-town.co.uk](http://hero-town.co.uk)